



FOOTBALL LEAGUE DIVISION 3

SATURDAY 10 JANUARY 1976 KO 3.00

GILLINGHAM

SWINDON TOWN

16



GILLINGHAM FOOTBALL CLUB CO LTD



DIRECTORS

- Dr C S Grossmark (Chairman)
- C A L Cox ● J W Leech
- S H Martin ● B B Moore

- Manager: G Summers
- Assistant Manager: A Hodgkinson
- Medical Officer: Dr C S Grossmark
- Treasurer: S H Martin
- Club Secretary: M A Bramley
- Company Secretary: R F Swan
- Commercial Manager: Ken Boniface

**PRIESTFIELD STADIUM
GILLINGHAM KENT
TELEPHONE: MEDWAY 51854**

Magazine Editor: Andy Bradley

Printed by:
The Kent Art Printers Ltd Rochester

Two consecutive wins have not only pushed us up the League table but it has worked wonders for the morale of players and supporters alike. Of course we are delighted with our two recent performances but I have said often enough that it has been coming for over a month. Our displays in this period had everything but the right results. Our performances at Chester, in the second half of the Brighton cup-tie and the whole of the Peterborough game were excellent, but what did we have at the end of all that effort? Just two League points and knocked out of the cup.

Well, what's made the difference since then? Just a little bit of good fortune, that's all, but it's taken a tremendous amount of hard work and enthusiasm by both us and supporters to get us out of that rut. It's all right saying that results will come if you are playing right but it is also very easy for players to disappear when the pressure is on and for the fans to turn on the team and its individuals. But here

GERRY

OFF THE

Our experience at Walsall last week emphasised just how important it is that stadiums are safe from weather damage. It was a frightening experience for the players as sheeting from the stand blew off and bounced over the pitch. The match was abandoned. On leaving the dressing room a huge sheet of glass blew out of the side of the stand and crashed down on the area we had just passed.

It has just been announced that the Pool Promoters Association have agreed with the Football League to make a percentage of the money placed on their Spotball Competition available for the benefit of League football. A

PICKWICK CLEANERS

421 HIGH STREET, CHATHAM, KENT — MEDWAY 45324

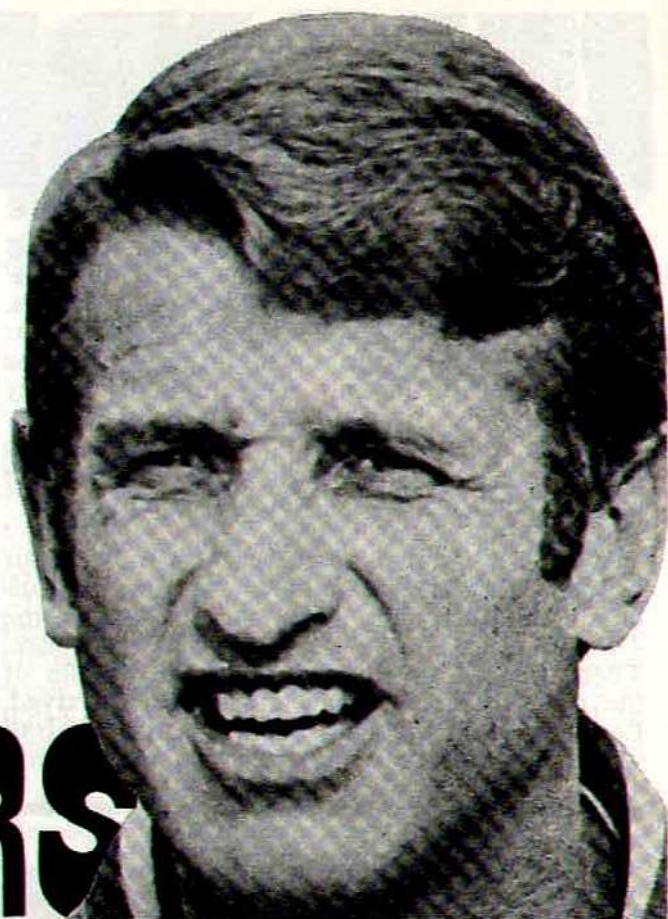
- WINDOW CLEANING — OFFICE CLEANING — CARPET CLEANING
- MEDWAY'S LEADING DRY CLEANERS
- 20% DISCOUNT TO MEMBERS OF THE GILLS DISCOUNT CLUB

CLIVE MORMAN AND TERRY GIBBS WISH THE GILLS GOOD FORTUNE

just the reverse happened, the team spirit has been magnificent and you, the supporters, have been just as good. I very much appreciate the backing you have given us. Everyone must have enjoyed our last home game against Brighton, it really was a nail-biter and although I criticised Ron Hillyard in the two previous games, his performance against Brighton was first class.

To go to Crystal Palace and win 1-0 was a rewarding experience. We set out with the idea of going at them but just the reverse occurred. They started like a house on fire and we had to work like mad to stay with them and only did so by some brilliant defending.

Today we welcome Swindon Town who have enough experienced players to give anyone trouble. You fans have played an important part in our recent improved performances, make sure you commit yourselves again today and make our ground vibrate with your encouragement.



SUMMERS

FIELD

Football Grounds' Improvement Trust has now been established to receive and disburse these contributions.

The Trust can apply the money for the following objects: (1) To enable clubs to comply with the Safety of Sports Grounds Act 1975. (2) The improvement of spectator amenities and facilities at club grounds. (3) The development of sport complexes as part of club grounds for the benefit of the sporting public of the United Kingdom. (4) Generally to provide for the benefit of the game of football within the United Kingdom.

Malcolm Bramley

GILLS TALENT COMPETITION

GRAND FINAL

Queens Theatre, Sittingbourne

7.30 p.m.

Sunday, 18th January

12 DIFFERENT ACTS

Licensed Refreshments

Tickets available here, from the Queens Theatre and from the Evening Post, Chatham

Prices £1, 80p and 60p



Graham LINES
INSURANCE BROKERS
MOTOR INSURANCE

54 WATLING ST
GILLINGHAM KENT ME7 2YN

MEDWAY 50593
or
50737

SPECIAL TERMS FOR MEMBERS OF THE GILLS DISCOUNT CLUB

INSIDE CHAT

Help Our Doorman—Help the Club

Terry Gibbs, the doorman at the players' entrance and who also helps us in many ways, is desperate to lose weight. He is looking for sponsors to give him more incentive to lose three stones by the end of March. Any money raised will be used to buy the club a new weighing machine. If you would be willing to help Terry and at the same time help the club contact Club Secretary Malcolm Bramley.

Problems of Coach Travel

We have not had much luck lately with our coach journeys. The reserves travelled to Colchester recently and after winning the game 4-1 the coach broke down on the way back. There was a two-hour wait in the middle of the night before a replacement coach arrived. Last week half the return journey from Walsall was done at a crawl because the temperature

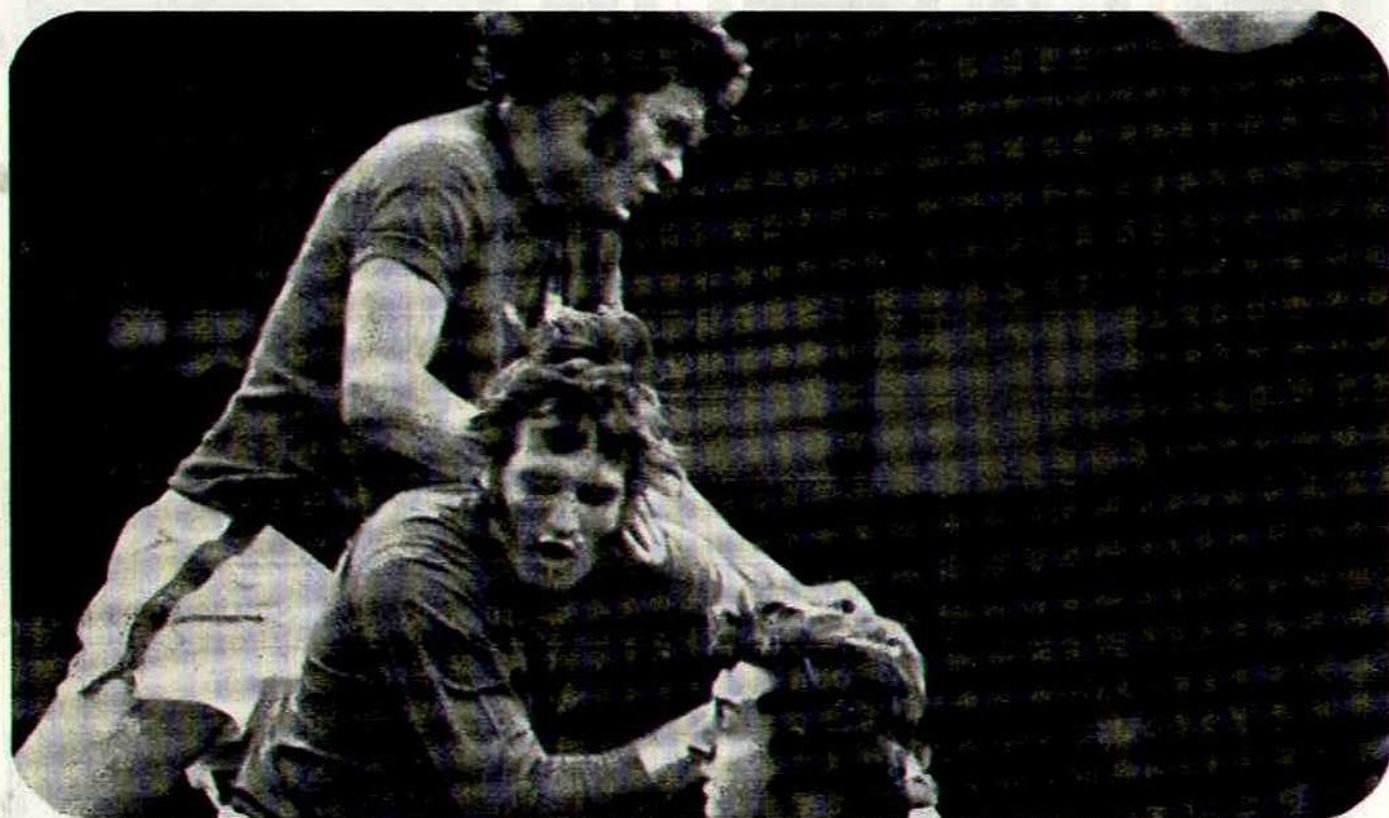
gauge showed the coach was overheating. After a long journey home it was discovered there was nothing wrong with the coach and it was the gauge which had been faulty. It's not all glamour in football as some people think.

Correspondence

We have received the following letter from Mr. E. Coultham of Ilford . . .

"I have noticed time and again, a goalkeeper anticipating, obviously from pre-match briefing, which way the penalty-taker is going to place his kick. This often results in the goalkeeper going one way and the ball the other when the penalty-taker decides to change his routine.

My contention is that a goalkeeper stands a better chance by glueing his eyes to the ball and waiting, rather than being fed scientific data before the match.



FOR MOWER SPARES AND NEW MOWERS CONTACT
MOWER MAINTENANCE

67-69 LOWER BOXLEY ROAD, MAIDSTONE • TELEPHONE 58648

LARGE STOCKS • SPECIAL OFFERS TO GILLS DISCOUNT CLUB MEMBERS

I, and I am sure other supporters, would be interested in the views of Ron Hillyard and Alan Hodgkinson. Do they advocate trying to pre-judge the direction?"

Alan Hodgkinson replies . . . "Pre-judging sometimes pays off but I once came a cropper when facing a penalty against Danny Blanchflower. The previous week I had watched Danny take a penalty on television and I decided to dive in the same direction. Of course Danny put the ball in the opposite corner and then walked up to me and said: 'Alan, that's what you get from watching television.' I always used to think to myself as a penalty was about to be taken that I am a better goalkeeper than he is a penalty-taker."

Ron Hillyard replies . . . "I always take notice of pre-match indications regarding which direction the penalty-taker places his kick. If I know in advance which way he normally kicks, at least there is a 50 per cent chance of diving the right way! All I think of when facing a penalty is just when is the right time to move."

If any supporters would like a query answered by anyone from the Gills, then please write to Club Secretary Malcolm Bramley.

COMPETITION

No. 14

There's two free tickets for the Gills Talent Competition final if you can recognise the three players in the picture opposite. Send your solutions to Competition 14, Gillingham Football Club, Priestfield Stadium, Gillingham by next Thursday, 15th January.

Competition 11

Winners: £3 voucher—M. Rolfe of Shakespeare Road, Gillingham; £2—D. Tritton, Blean Road, Gillingham; £1—R. Pound, Seagull Road, Strood. They all identified Damien Richardson, Dave Galvin and Dave Shipperley.

Competition 12

D. Hull of Belgrave Road, Sheerness won the autographed football by identifying Mike Green, Brian Yeo and Mike Drewery.

Competition 13

Two seats for today's game go to B. V. Edwards of Frederick Street, Sittingbourne who recognised Bobby Svarc, Kenny Hill, Dick Tydeman, Ron Hillyard, George Ley and George Jacks.

DIV 3 TOPICS

Of the 11 Division Three sides taking part in the third round of the F.A. Cup, best performances were put up by **Cardiff**, winners by the only goal at **Orient**, **Peterborough**, who drew 0-0 at Nottingham Forest on New Year's Day, and **Bury**, who returned from First Division Middlesbrough with a goal-less draw. **Southend** beat **Brighton** 2-1 to earn a home tie with Division colleagues **Cardiff**, **Crystal Palace** were made to fight all the way for their win at non-League Scarborough by the odd goal in three and today's visitors, **Swindon Town**, had to replay at Tooting during the week.

Aldershot, **Sheffield Wednesday**, **Halifax**, **Hereford** and **Brighton** were eliminated.

With only five points covering the 18 teams from second placed **Brighton** down to **Colchester**, who are 19th in the Division the way is clear for any team capable of stringing a few good results together to make a promotion place their own.

Swindon, tipped by the writer at the start of the season for a Division Two place in 1976/77, can still reach 63 points. They have won one, drawn two and lost the other nine of their away games. The win came at Rotherham when Anderson and Moss (penalty) ensured a 2-0 success and the points were shared at Walsall (1-1) and at Millwall (0-0), their last League match. At the County Ground, the last League match saw an end to Cardiff's recent run of victories, Swindon's 4-0 win being their best of the season. Goals from Dave Galvin and Peter Feely gave the Gills a share of the points at Swindon. In the League Cup, Town beat Millwall home and away in the first round and took a two-goal lead against Wolves before being forced to a replay at Molineux, where Swindon lost 2-3. Newport were defeated in the first round of the F.A. Cup after a draw in Wales, Hendon were the victims in round two and it was Wolves all over again as Tooting countered two early Town goals with scores in 86 and 87 minutes.

Mark Agate

ALL YOUR D.I.Y. SUPPLIES

Timber Ply Blockboard Doors Sand Cement Bricks Blocks etc

SANDELL SMYTHE & DRAYSON

Forstal Road, Aylesford, Maidstone 70111. Jenkins Dale Chatham 43696



FACTS

DIVISION 3

DATE		OPPONENTS		F A	ATT	H	D	W	L	T	S	T	J	O	G	R	V	F	K	W	F	T	D	W	
Aug.	16	Bury	A	0-2	3932	1	-	2	3	5	4	-	6	8	-	7	9	10	11*	-	12	-	-	-	-
	23	Grimsby	H	3-0	4407	1	-	2	3	4	5	-	6	7*	12	8	9	10	11	-	12	-	-	-	
	30	Swindon	A	2-2	6786	1	-	2	3	4	5	-	6*	7	-	8	9	10	11	12	-	-	-	-	
Sept.	6	Preston	H	1-0	5786	1	-	-	3	4	5	-	6	7	-	8	9	10	11	2	-	12	-	-	
	13	Wrexham	A	0-2	2654	1	-	2	3	4	5	-	6	7	-	8	9	10*	-	11	-	12	-	-	
	20	Mansfield	H	3-1	5742	1	-	2	3	4	-	5*	6	7	-	8	9	12	11	-	-	-	10	-	
	23	Rotherham	H	0-0	5498	1	-	2	3	4	-	5	6	7	-	8	9	12	11	-	-	-	10*	-	
	27	Hereford	A	1-1	5512	1	-	2	3	4	-	5	6	7*	-	8	9	-	11	12	-	-	10	-	
Oct.	4	Halifax	H	1-1	5934	1	-	2	3	4*	-	5	6	7	-	8	9	10	11	12	-	-	-	-	
	11	Port Vale	H	2-1	5041	1	-	-	3	-	4	5	6	7*	-	8	9	12	11	2	-	-	10	-	
	18	Shrewsbury	A	0-1	3242	1	-	12	3	-	4	5	6	-	7	8	9	-	11	2	-	-	10*	-	
	21	Chesterfield	H	2-2	5573	1	-	12	3	-	4	5	6	7*	-	8	9	-	11	2	-	-	10	-	
	25	Walsall	H	2-3	5942	1	-	2	3	-	4	5	-	7	-	8	9	11	11	6	-	5	10	-	
Nov.	1	Aldershot	A	0-3	4290	1	-	2	3	4	-	5	6	7*	-	8	9	-	11	10	-	-	12	-	
	5	Sheffield Wed.	A	0-1	8235	1	-	4	3	-	-	5	6	7	-	8	9	-	10*	2	-	12	11	-	
	8	Cardiff	H	2-2	5762	1	-	4	3	-	-	5	6	7	1	-	8	9	10	2	-	-	11	-	
	15	Millwall	A	2-2	6838	1	-	4	3	-	-	5	6	7	1	-	8	9	-	2	12	-	11	10	
	29	Colchester	H	0-1	5402	1	2	-	3	-	-	5	6	7	-	8	9	12	-	4	-	-	11*	-	
Dec.	6	Chester	A	2-2	4451	1	2	-	3	4	-	5	6	7	-	-	9	11	-	8	5	-	-	10	
	20	Peterborough	H	2-2	4086	1	-	-	3	4	-	5	6	7*	-	-	9	11	-	2	12	8	-	10	
	27	Brighton	H	1-0	9294	1	-	-	3	4	-	5	6	7	-	-	9	11	-	2	5	8	-	10	
	30	Crystal Palace	A	1-0	20919	1	-	5	3	4	-	5	6	7	-	-	9	-	-	2	-	8	-	10	
Jan.	2	Walsall	A	1-1A*	6057	1	-	5	3	4	-	5	6	7	-	-	9	-	-	2	-	8	-	10	
	10	Swindon	H																						
	17	Mansfield	A																						
	24	Wrexham	H																						
	31	Chesterfield	A																						
Feb.	7	Sheffield Wed.	H																						
	14	Cardiff	A																						
	21	Millwall	H																						
	24	Rotherham	A																						
Mar.	6	Aldershot	H																						
	9	Halifax	A																						
	13	Port Vale	A																						
	16	Shrewsbury	H																						
	20	Colchester	A																						
	27	Chester	H																						
Apr.	31	Peterborough	A																						
	3	Bury	H																						
	6	Hereford	H																						
	10	Preston	A																						
	16	Southend	H																						
	17	Crystal Palace	H																						
	19	Brighton	A																						
	24	Grimsby	A																						
	A*	Match Abandoned																							

A* Match Abandoned

LEAGUE CUP

Aug. 20	Reading	A	1-0	4846	1	-	2	3	4	5	6	7	8	9	10	11	-	-	12	-	-	-	-
25	Reading	H	1-1	5016	1	-	2	3	4	5	6	7	8	9	10	11	12	-	-	-	-	-	-
Sept. 9	Carlisle	A	0-2	5274	1	-	-	3	4	5	6	7	-	8	9	10	-	2	12	11*	-	-	-

F.A. CUP

Nov. 22	Weymouth	A	2-0	3149	1	2	4	3	4	5	6	7	-	12	9	11	-	8	5	5	10	-	-
Dec. 13	Brighton	H	0-1	10579	1	-	2*	3	4	5	6	7	-	-	9	-	8	10	6	-	11	-	-

& FIGURES

MARKSMEN

Who's the best goalkeeper in the Football League this season? And who's the best centre-half in the Third Division? According to the *Sunday People* the answers are Ron Hillyard and Dave Shipperley. The newspaper recently published a mid-season list of averages for the merit marks (out of 10) their correspondents award each Saturday and Ron, with an average of 7.26, stands out as the 'keeper with the highest marks while big Dave, with an average of exactly 7, has the top mark for a centre-half in Division Three. Ron, especially, has an excellent chance of finishing among the money as the competition is being sponsored by *St. Bruno*, the tobacco manufacturers. At the end of the season £250 goes to the player with the best figures in Division Three.

GOALSCORERS

Division 3: Richardson 6, Feely 6, Jacks 3, Shipperley 2, Weatherly 2, Westwood 2, Durrell 1, Galvin 1, Gauden 1, Hill 1, Hilton 1, Ley 1.
F.A. Cup: Richardson 2.

League Cup: Richardson 1, Opps 1.

Midweek League: Weatherly 6, Davis 4, Fogarty 4, Wilks 4, C. Plumb 2, T. Baldwin 1, Hill 1, A. Muskett 1, Richardson 1, Rowe 1, Opps 1.

Youth Team: T. Baldwin 9, T. Jolley 5, Weatherly 5, B. Hughes 3, P. McDonald 2, A. Crebbin 1, A. Draper 1, M. Lembol 1, K. Norton 1, M. Swaine 1.

Average Home Attendance (Div 3): 5,705.

LEAGUE DIVISION THREE

(Up to and including Saturday, 3rd January)

Crystal Palace	23	12	7	4	37	20	31
Brighton	22	12	2	8	42	26	26
Peterborough	22	8	10	4	37	30	26
Cardiff	22	10	5	7	37	27	25
Hereford	20	10	5	5	32	26	25
Walsall	24	9	7	8	34	33	25
Bury	22	8	8	6	26	20	24
Port Vale	23	8	7	8	29	25	23
Wrexham	23	9	5	9	27	28	23
Grimsby	23	10	3	10	37	43	23
Millwall	23	7	9	7	27	32	23
Chester	22	8	7	7	24	29	23
Preston	21	8	6	7	26	25	22
Shrewsbury	21	9	4	8	31	30	22
Rotherham	22	8	6	8	25	28	22
Gillingham	22	6	9	7	27	29	21
Halifax	22	7	7	8	26	31	21
Aldershot	22	7	7	8	31	37	21
Colchester	23	7	7	9	19	27	21
Chesterfield	23	7	5	11	35	37	19
Southend	20	7	4	9	35	34	18
Sheffield Wed.	22	4	10	8	26	29	18
Swindon	22	6	3	13	25	39	15
Mansfield	21	4	5	12	25	35	13

THREE TOWNS OFFICE EQUIPMENT LTD

FIRST CLASS SALES & SERVICE OF ALL TYPES OF OFFICE EQUIPMENT AND POCKET CALCULATORS at PRICES you can AFFORD



New and reconditioned Typewriters, Filing Cabinets, Stationery etc. Catalogues available on request

MEDWAY 54685/53363

160-16A CANTERBURY STREET, GILLINGHAM

Preferential terms to members of the GILLS DISCOUNT CLUB

J. BURNS & SON

FOR ALL SOLID FUELS



GOOD FUEL AND GOOD SERVICE ALL THE YEAR ROUND AT PRICES TO SUIT YOU

MEDWAY 43170

74 ROCHESTER AVENUE, ROCHESTER

10 CASTLE AVENUE, ROCHESTER

BENHAM'S OFF LICENCE

70 TORONTO RD. GILLINGHAM

MEDWAY 51624

18 STATION RD. RAINHAM

MEDWAY 33790

THE GILLS IN ACTION



Top: Dave Shipperley (left), Ron Hillyard (on the ground) and George Ley watch as George Jacks clears the danger in the last home match against Brighton.

Bottom: This time they're sure the ball stays out.

Pictures by



INVEST YOUR SAVINGS WITH

CHATHAM RELIANCE BUILDING SOCIETY

ESTABLISHED (1898)

HEAD OFFICE:
MANOR ROAD, CHATHAM
KENT, MEDWAY 48944 (5 lines)

Branches and Offices throughout Kent

" My dad says

When my dad and me go to see the Gills we take the bus cos my dad says it's easier cos he don't have to find somewhere to park the car and my dad's mates all go by bus too and my dad says it's better cos we can all talk about the match together on the bus on the way home and my dad says that when the Gills are away it is better to go on the coach cos he don't have to find the way and my dad says"

Buses run direct to and from Gillingham Bus Station for home matches from Chatham, Gravesend, Maidstone, Rainham, Rochester, Sittingbourne, Strood and Wigmore.

MAIDSTONE & DISTRICT
Associated with the National Bus Company

TAKE ADVANTAGE OF THE
GILLS DISCOUNT CLUB

- TROPHIES, JEWELLERY
- ENGAGEMENT, WEDDING
AND SIGNET RINGS
- WATCHES AND CLOCKS

A. W. MATTHEWS LTD

54 HIGH STREET, GILLINGHAM

● TELEPHONE: MEDWAY 53020

Bottom: This time they're all watching Ron Hillyard as he dives across to make sure the ball stays out.

Pictures by Chatham News Chief Photographer Ray Christopher.

MIDWEEK LEAGUE

	P	W	D	L	F	A	Pts
Watford	16	10	3	3	34	16	23
Peterborough	12	7	3	2	27	17	17
Cambridge	12	6	5	1	20	13	17
Charlton	10	7	2	1	32	16	16
Southend	13	6	2	5	23	17	14
Brighton	13	5	4	4	19	19	14
Luton	14	4	6	4	21	24	14
Gillingham	13	4	3	6	26	21	11
Millwall	13	4	3	6	26	34	11
Orient	7	4	0	3	16	13	8
Portsmouth	12	3	2	7	16	24	8
Brentford	13	2	4	7	12	26	8
Colchester	14	3	2	9	21	40	8
Northampton	12	2	1	9	19	32	5

S.E. COUNTIES LEAGUE

	P	W	D	L	F	A	Pts
Ipswich	18	15	1	2	53	19	31
Fulham	16	13	2	1	34	13	28
Southend	17	11	3	3	37	19	25
Chelsea	18	11	2	5	44	31	24
West Ham	18	8	5	5	32	21	21
Crystal Palace	19	8	2	9	33	31	18
Watford	16	6	5	5	27	21	17
Portsmouth	14	7	2	5	31	20	16
Tottenham	18	7	2	9	28	27	16
Q.P.R.	19	6	4	9	31	32	16
Gillingham	17	6	3	8	25	30	15
Arsenal	18	4	5	9	18	40	13
Norwich	18	4	4	10	14	35	12
Orient	17	3	5	9	15	42	11
Charlton	19	3	3	13	29	44	9
Millwall	18	2	4	12	13	39	7

WANTED

Many people have asked, whatever happened to the "United We Stand" record that was always played at home matches. Unfortunately we've lost the record. Has anyone a copy they would be willing to part with?

SCRAP

OF 1908-09

By 1908 New Brompton had been in the Southern League for 14 years and after their brilliant Cup run of the previous season they were beginning to establish themselves in the footballing world.

The improvement continued with Brompton finishing a creditable seventh in the Southern League table. The highest number of points—41—were gained, due mainly to a much better away record. Fifteen points were obtained from their travels, although the team lost heavily against eventual champions Northampton (0-7) and runners-up Swindon (1-6).

If New Brompton were the giant killers in the F.A. Cup the previous season, then season 1908-09 saw themselves on the receiving end of a giant killing. In the sixth qualifying round, Brompton were drawn away to Southern League Division Two side Hastings and St. Leonards. They managed a 2-2 draw, but four days later at Priestfield went down by the odd goal.

RESULTS: Brentford D 1-1, D 1-1; Brighton W 2-0, D 1-1; Bristol Rovers W 2-0, L 0-1; Clapton Orient Reserves L 0-4, L 0-3; Coventry City L 0-1, W 4-3; Crystal Palace W 2-1, W 2-1; Exeter City W 3-1, W 3-1; Luton Town W 1-0, L 0-3; Millwall W 1-0, L 0-1; Northampton Town L 0-2, L 0-7; Norwich City W 2-0, D 0-0; Plymouth Argyle L 1-2, D 1-1; Portsmouth L 2-3, D 1-1; Q.P.R. W 1-0, L 1-2; Reading L 0-3, W 1-0; Southampton D 1-1, L 0-2; Southend United W 1-0, L 0-1; Swindon Town W 3-1, L 1-6; Watford W 5-1, L 1-2; West Ham United W 2-1, W 1-0. (Home results first.)

THE RECORDS PLAYED AT TODAY'S
GAME ARE BY COURTESY OF

IMPACT MUSIC CENTRE

49 HIGH STREET, GILLINGHAM

SUPPORTERS

With the Gills. Two great results against Brighton and Crystal Palace, and if the Gills can maintain this form against the two sides at the other end of the table, today's visitors and Mansfield next week, we'll be set for an onslaught on the promotion places.

Give the Lads Your Encouragement. Let's hear the entire Stadium chanting "Gill-ing-ham!" Are you ready? Then let's hear from you!

Today's Mascot is Stuart Barlow, eight years

ASSOCIATION

old, of Yarrow Road, Walderslade. Attends Oaklands School and helps in our Rainham End Sales Shop. Favourite player is Ron Hill-yard. Also interested in football facts and figures.

Gillingham Supporters F.C. 0-3 v. Crispin. Return match tomorrow morning at Barnfield.

Miss Gillingham F.C. Entries for our Football Supporters' Queen to Alan Liptrott at the Social Club. Finals Night Saturday, 7th Feb., 1976 (after Sheffield Wednesday home game).

BOOK

SOUTHERN LEAGUE DIVISION ONE

Final Table Season 1908-09

	P	W	D	L	F	A	Pts
Northampton	40	25	5	10	90	45	55
Swindon	40	22	5	13	96	55	49
Southampton	40	19	10	11	67	58	48
Portsmouth	40	18	10	12	68	60	46
Bristol Rovers	40	17	9	14	60	63	43
Exeter	40	18	6	16	56	65	42
New Brompton	40	17	7	16	48	59	41
Reading	40	11	18	11	60	57	40
Luton	40	17	6	17	59	60	40
Plymouth Argyle	40	15	10	15	46	47	40
Millwall	40	16	6	18	59	61	38
Southend	40	14	10	16	52	54	38
Clapton Orient R.	40	15	8	17	52	55	38
Watford	40	14	9	17	51	64	37
Q.P.R.	40	12	12	16	52	50	36
Crystal Palace	40	12	12	16	62	62	36
West Ham	40	16	4	20	56	60	36
Brighton	40	14	7	19	60	61	35
Norwich	40	12	11	17	59	75	35
Coventry	40	15	4	21	64	91	34
Brentford	40	13	7	20	59	74	33

Research by Roger Triggs

PINTS FOR POINTS

RESULTS

FIRST

Andrew Bonnywell of Pepys Way, Strood won 17 bottles of wine, kindly donated by **Saccone & Speed Ltd.**, and a weekend holiday in Europe sponsored by **Blue Sky Travel** of Chatham.

SECOND

S. J. Chaplin of Fleet Road, Rochester won a gallon of petrol, sponsored by the **Alan Pond Group of Companies**, for every point the Gills collected.

THIRD

Michael Ling of Windmill Street, Frindsbury won 17 pints of beer, sponsored by **Watney Mann**, and a Christmas hamper from **Unigate Ltd.**

FOURTH

Mr. R. Martin of Whitegate Court, Parkwood won a pint of milk for every point and Christmas hamper, both provided by **Unigate Ltd.**

FIFTH and SIXTH

Alan Tyrer of Tilbury Road, Rainham and P. G. Evans of Walmer Gardens, Sittingbourne both won Main Stand season tickets for the rest of 1975-76.

Photographs used on the print cover and throughout this magazine are by courtesy of The Chatham News and Evening Post.



PREF. TERMS TO MEMBERS
OF THE
GILLS DISCOUNT CLUB

Settle on a
BUSH

BURNS RADIO LTD.

(COLOUR & HI-FI)

Hire — Sales — Service

96 WOODLANDS ROAD,
(Off A2 at Gillingham Golf Course)
GILLINGHAM

ONLY 500 YARDS FROM
PRIESTFIELD STADIUM

SABA
tv · radio · hifi

24 Hour Phone Service
MEDWAY 52858



TOSHIBA
In Touch with Tomorrow
Plus all leading makes.



MOORE ON THE GILLS

The New Year has dawned bright and full of promise for Bill Fogarty, Gillingham's 18-year-old midfield player.

Yet another product of the club's marvellous and highly productive youth scheme, Bill has established himself in the first team and done especially well against top opposition such as Brighton, twice and Crystal Palace.

But in achieving his aim of making the League side, Bill served a particularly tough apprenticeship before turning professional last season.

"I was struggling to live on the money apprentices are paid, even though I was living at home in Sydenham. There were times when I wondered whether it was all worth it.

"I had turned down the chance to become a compositor and doubted the wisdom of that decision. But the rest of the lads were great in giving me encouragement and I'm very happy with the way things have turned out."

Discovered by former Gills' midfield man John Arnott, a physical education master at his school, Kingsdale, Sydenham, Bill, then 15,

youth team has had a big influence on my career."

Bill's first introduction to League soccer was an inauspicious affair as substitute in the side beaten 4-0 by Crystal Palace at the very end of last season.

He considerably erased the memory of that night a week ago when he played his part in the superb 1-0 win at Palace.

"Beating Palace that night gave me the biggest thrill of my career so far. What with it being our first away win and my father and a lot of relatives coming to watch.

"I didn't think the national press gave us enough credit for that win. It was a great night for Gillingham."

That night fully compensated for Bill's misery at Carlisle in the League Cup earlier in the season.

"I felt bad after that game and sorry for the lads. I was clean through twice and muffed it. I want to forget that one in a hurry."

When not playing, Bill is a bad soccer spec-

BRIAN MOORE CHATS TO

was playing for the school and South London Schools.

Andy Nelson, club manager at the time, took one look at Bill in a trial and signed him immediately as an apprentice, converting him from a front runner into a midfield man.

Said Bill: "I've been extremely fortunate really because all the managers I've served under, Andy Nelson, Len Ashurst and now Gerry Summers have helped me with my game.

"And of course Bill Collins who runs the

tator and watches very little on television.

"I want to be out there getting involved all the time. So far as television is concerned, I make a point of watching Alan Hudson and Stan Bowles, whom I really admire, but apart from that a lot of it leaves me cold."

Bill's most immediate ambition is to retain his first team place for the rest of this season. On the strength of his matches so far under Gerry Summers, he should succeed.

Photographs by Evening Post and Chatham News



BILL FOGARTY

**EVENING
POST**

**full
match
reports**

At the heart of Medway

GOOD

SWINDON

Jim Barron (Goalkeeper). Hails from Co. Durham but started his career with Wolves. Soon moved on to Chelsea and then joined Oxford in March 1966 where he made 152 League appearances prior to a transfer to Nottingham Forest in July 1970. Represented Forest on 155 occasions and arrived at Swindon in August 1974.

Jimmy Allan (Goalkeeper). Born at Inverness, he signed apprentice professional forms from Brora Rangers in October 1970 and turned full time in July 1971. Made his senior debut two months later and was first choice until the arrival of Barron.

Will Dixon (Full back). Joined Swindon on a free transfer from Reading in the summer of 1973 after making 150 appearances in four seasons. A Londoner, he began with Arsenal and moved to Reading in the 1969 close season.

John Trollope (Full back). The longest serving player on the staff, having graduated from the juniors and turned professional in July 1960. Made his first team debut the following month and had set a club record of 617 League appearances at the end of last term.

Frank Burrows (Centre half). Gained experience with Raith Rovers before entering the Football League with Scunthorpe in 1965. Joined Swindon in 1968 and held a first team place until spring 1974. Was then loaned to Mansfield but returned to Swindon to regain his place in the side.

Ken Stroud (Defender). London born and developed by Swindon for whom he signed apprentice forms in 1967. Became a full pro-

AFTERNOON

Formed: 1881.

Ground: County Ground.

Record Attendance: 32,000 v. Arsenal (F.A. Cup) January 1972.

Record Receipts: £12,594 v. Arsenal (F.A. Cup) January 1972.

Record Victory: 10-1 v. Farnham United Breweries (F.A. Cup) 1925-26.

Record Defeat: 1-10 v. Manchester City (F.A. Cup) 1929-30.

Record Transfer Fee Paid: £88,000 to Wolves for Peter Eastoe, March 1974.

Record Transfer Fee Received: £150,000 from Crystal Palace for Don Rogers, October 1972.

Record Goalscorer: Harry Morris with 47 goals in season 1926-27.

Honours: Division 3 Runners-up 1962-63 and 1968-69. League Cup Winners 1968-69. Anglo-Italian Cup Winners 1970.



fessional in 1970 and established himself in the first team twelve months ago.

Colin Proppett (Defender). Joined Swindon from Norwich in October 1974 after a month on loan and missed only five matches last season. Made 34 appearances for Norwich in the First Division after signing from Sheffield Wednesday in May 1973.

Joe Butler (Defender). Has made nearly 350 League appearances for Swindon since joining them from home town club Newcastle in August 1965.

John Emmanuel (Midfield). Loaned from Bristol City earlier this season to assist in the club's efforts to climb the table. Held a place in the City's League side for several seasons and made two appearances for Wales as substitute in 1973.

Terry Hubbard (Midfield). Developed by Swindon, with whom he turned professional in 1969 and made his debut three years ago this month. Now an established player, he has represented Wales at Under 23 level.

John McLaughlin (Midfield). Equally at home at full back, in which position he made his mark with Colchester where he became one of the many players to graduate from the youth policy. Was transferred to Swindon in December 1973.

Dave Moss (Right wing). Represented his local side, Witney, as an amateur before turning professional with Swindon in 1969. Made the position his own in August 1973 and has been second highest scorer in the past two seasons.

Peter Eastoe (Forward). Cost a club record fee of £88,000 to Wolves in March 1974 following a four month loan period and has proved a consistent scorer, finishing with 31 League and cup goals last season.

Dave Syrett (Forward). A native of Salisbury, he became an apprentice professional in July 1972 and signed full time in November 1973. Has yet to establish himself in the League side.

Trevor Anderson (Left wing). Arrived from Manchester United in November 1974 and is a Northern Ireland international, having scored twice on his debut against Cyprus in May 1973. Left Portadown for Old Trafford in October 1972 and had 13 outings before his transfer.

Tom Jenkins (Left wing). Rejected by West Ham and Orient, he eventually made the grade with Reading who signed him from Margate in 1969. Within six months Southampton had paid £60,000 for his signature and he held a regular place until August 1972, joining Swindon three months later.

John Skilling

Back Row (l to r): Anderson, Syrett, Burrows, Eastoe, Allan, Barron, Jenkins, Stroud, Trollope, Proppett. Centre Row: Dixon, Moss, Hubbard, McLaughlin, Butler. Front Row: Gardner, Chalklin.

● PAST PERFORMANCES

The Gills have an impressive home record against the Robins which was maintained with a 3-1 win last season. Allan Gauden opened the scoring after just five minutes but John Trollope equalised from the penalty spot.

Damien Richardson put Gillingham back in front and then Dave Chadwick made certain of victory with a brilliant solo effort.

Swindon won at the County Ground by virtue of a Peter Eastoe goal—the only score of the game.

Gillingham have already visited Swindon this term and goals from Dave Galvin and Peter Feely earned a point from a 2-2 draw.

Gillingham v Swindon, League Record

	P	W	D	L	F	A	Pts
At Priestfield:	31	18	10	3	54	23	46
At Co. Ground:	32	4	7	21	22	64	15
	63	22	17	24	76	87	61

Douglas Engineering

Prop: DOUGLAS ENTERPRISE (MEDWAY) LIMITED

PRECISION ENGINEERS

MACHINING
TOOLING
& LIGHT
ASSEMBLIES



SHORT ORDERS
AND

QTY. PRODUCTION



SPECIALISTS
IN

NYLON & PLASTIC
MACHINING



OUR CAPACITY
YOUR
EXTRA HANDS

FOLLOW THE GILLS
BE
PROGRESSIVE

SKILLED?
AND THINKING OF
A JOB CHANGE?



START A NEW
SEASON WITH
DOUGLAS



JOIN THE HAPPY
SET AND BE
WELL PAID FOR
YOUR EFFORTS

EVA ROAD, GILLINGHAM, KENT ME7 5NE Tel: MEDWAY (0634) 572325

TEAMS

GILLINGHAM

(Blue shirts/white shorts)

Ron Hillyard	1
Graham Knight	2
George Ley	3
Dave Galvin	4
Dave Shipperley	5
Dick Tydeman	6
George Jacks	7
Bill Fogarty	8
Damien Richardson	9
Danny Westwood	10
Joe Durrell	11
	12

SWINDON TOWN

(Red shirts/black shorts)

Jimmy Barron
Gerry Taylor
John Trollope
Kenny Stroud
Frank Burrows
John McLaughlin
Dave Moss
Tommy Jenkins
Peter Eastoe
David Syrett
Trevor Anderson
Will Dixon

SCORE CHECK

HT

FT

DIVISION ONE

Arsenal/Aston Villa
Birmingham/Wolves
Coventry/Sheff. Utd.
Derby/Tottenham
Leeds/Stoke
Liverpool/Ipswich
Man. Utd./Q.P.R.
Middlesboro/Man. City
Newcastle/Everton
Norwich/Burnley
West Ham/Leicester

DIVISION TWO

Blackburn/Southampton
Blackpool/Charlton
Bolton/Luton
Bristol Rovers/Fulham
Chelsea/Oldham
Hull/Nottm. Forest
Notts Co./York
Oxford/Bristol City
Plymouth/Orient
Portsmouth/Sunderland
W.B.A./Sunderland

DIVISION THREE

Aldershot/Bury
Cardiff/Brighton
Chester/Mansfield
Chesterfield/Wrexham
Colchester/C. Palace
Millwall/Preston
Port Vale/Peterboro.
Rotherham/Southend
Sheff. Wed./Hereford
Shrewsbury/Grimsby
Walsall/Halifax

DIVISION FOUR

Bournemouth/Bradford
Brentford/Torquay
Cambridge/Swansea
Crewe/Doncaster
Lincoln/Hartlepool
Northampton/Barnsley
Rochdale/Huddersfield
Scunthorpe/Newport
Southport/Reading
Watford/Darlington

Scores will be announced.

OFFICIALS

Referee: RAY TINKLER (Boston)

Took up refereeing during National Service in the Army and has been on the League list since 1961 after refereeing in the Lincolnshire, Southern and Midland Leagues. He is company secretary to a group of farming companies.

Linesmen: H DEMPSEY/Pink Flag D H HOLLAND/Orang Flag

MATCH BALL

KINDLY DONATED BY
B STANTOS

NEXT AT PRIESTFIELD

- BRIGHTON
- WREXHAM

Midweek League
Monday, 12th January, K.O. 7.30 p.m.

Football League Division 3
Saturday, 24th January, K.O. 3.00 p.m.